

# Vernier Go Wireless<sup>®</sup> Electrode Amplifier

Order Code **GW-EA** or **GW-EA-NP**



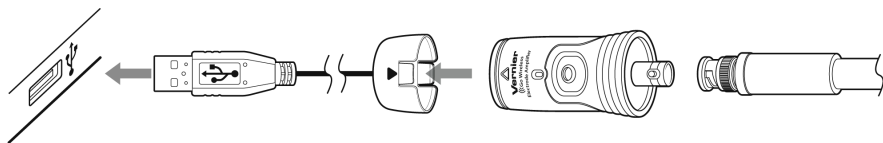
The Go Wireless Electrode Amplifier is a wireless mV and pH amplifier that connects to Vernier electrodes and compatible third-party BNC electrodes.

## What is Included with Go Wireless Electrode Amplifier

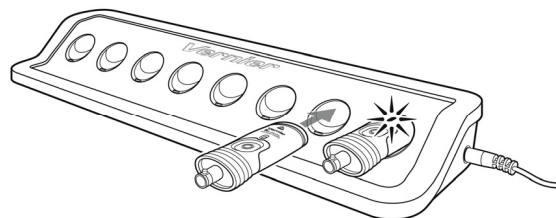
- Go Wireless Electrode Amplifier
- USB Charging Cable (not included in GW-EA-NP)
- This user guide
- Go Wireless app (free download from the App Store)

## Charging Go Wireless Electrode Amplifier

Connect Go Wireless Electrode Amplifier to the included USB Charging Cable and any USB device for two hours.



You can also charge up to eight Go Wireless Electrode Amplifiers or Go Wireless Temp probes using our Go Wireless Charging Station, sold separately (order code: GW-CRG). An LED on each Go Wireless Electrode Amplifier indicates charging status. A blue light indicates it is still charging. When the light goes off, it is finished charging.



## Supported Devices

Go Wireless Electrode Amplifier can be used with supported mobile devices\* that have Bluetooth<sup>®</sup> Smart support and one of our apps.

- iPad<sup>®</sup> (3rd generation or newer), iPad mini, and iPad Air
- iPhone<sup>®</sup> (4S or newer)
- iPod<sup>®</sup> touch (5th generation or newer)
- LabQuest 2 (model LQ2-LE), see [www.vernier.com/til/3085/](http://www.vernier.com/til/3085/)
- For Android<sup>™</sup> devices, see [www.vernier.com/gw-app](http://www.vernier.com/gw-app)

## Data-Collection Apps

Go Wireless Electrode Amplifier can be used with supported mobile devices\* that have Bluetooth Smart support and one of our apps.

- **Go Wireless app (free iOS app)** Available as a free download from the App Store, use this app to see a live digital readout from the sensor, record data for real-time graphing, and export data for further analysis in Graphical Analysis<sup>™</sup> for iPad and other applications. For more information or to download the app, see [www.vernier.com/gw-app](http://www.vernier.com/gw-app)
- **LabQuest 2 app (version 2.4 or newer)**

**NOTE:** Vernier products are designed for educational use. Our products are not designed nor are they recommended for any industrial, medical, or commercial process such as life support, patient diagnosis, control of a manufacturing process, or industrial testing of any kind.

## Specifications

Radio	2.4 GHz Bluetooth 4.0, Low Energy
Battery	100 mA Li-Poly
Units	pH or mV
Input range	±1000 mV or 0 - 14 pH
Accuracy (mV)	± 10 mV (factory calibration)
Accuracy (pH)	± 0.5 pH (factory calibration) ± 0.1 pH (user calibration)
Battery life (continuously on, 1 sample per second)	3 days
Input range	±1000 mV
Temperature range	-10 to 45°C
Maximum wireless range	30 m unobstructed

## How Go Wireless Electrode Amplifier Works

The electrode amplifier handle is a circuit that allows a standard BNC electrode to be monitored by a lab interface wirelessly.

Go Wireless Electrode Amplifier has one button and three LEDs.

### Button

- Press the button once to turn on Go Wireless Electrode Amplifier. A red LED indicator flashes when the unit is on.

\* For a full list of supported mobile devices, see [www.vernier.com/gw-app](http://www.vernier.com/gw-app)

- Press and hold the button for more than three seconds to put Go Wireless Electrode Amplifier into sleep mode. The red LED indicator stops flashing when sleeping and LED light is off.
- Press and hold the button for more than eight seconds to reset the system. This should not be necessary in normal operation.

#### Blue LED

Indicates charging status when Go Wireless Electrode Amplifier is connected to the Charging Cable or Charging Station.

- On – charging in progress
- Off – charging is complete

#### Red LED Flashing

Indicates Go Wireless Electrode Amplifier is awake and ready to connect.

#### Green LED Flashing

Indicates Go Wireless Electrode Amplifier is connected and taking data.

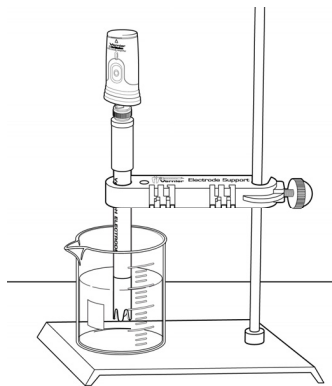
#### Red and Green LED Off

Indicates Go Wireless Electrode Amplifier is in the lowest power sleep mode.

### Collecting Data

#### Collecting Data with Go Wireless App

1. Press the power button on Go Wireless Electrode Amplifier to turn it on. The LED on the sensor will flash red.
2. Launch the app. Select your Go Wireless Electrode Amplifier from the list of available sensors. When the sensor is paired with the app, the sensor LED will flash green.  
**Note:** When you first connect to Go Wireless Electrode Amplifier, the units shown are pH. To collect data in mV, tap on the radio icon in the upper right corner. Under Units, select mV. This setting will be remembered until it is changed again.
3. Place the sensor tip into a beaker containing your sample. It is recommended that you use a utility clamp or Electrode Support to fasten the Go Wireless Electrode Amplifier and its electrode to a ring stand, as shown on next page for a pH electrode.



4. Tap Keep to store a data point into the table. You can change the sample description or add a note here. Tap Done.
5. Rinse the electrode with distilled water before reusing it.
6. Collect additional data as desired. Rows will continue to add to the table.

#### Collecting Data with LabQuest 2 App

1. Press the power button on Go Wireless Electrode Amplifier to turn it on. The LED on the sensor will flash red.
2. Choose New from the File menu. On the Meter screen, choose Go Wireless Setup from the Sensors menu. Select your Go Wireless Electrode Amplifier from the list of available sensors. When the sensor is paired with the software, the sensor LED will flash green.  
**Note:** When you first connect to Go Wireless Electrode Amplifier, the units shown are pH. To collect data in mV, tap on the red box on the Meter screen, select Go Wireless, then select Set Units, then mV. This setting will be remembered until it is changed again.
3. Collect data as desired.

When you are finished making measurements, rinse the electrode with distilled water. Store the electrode according to the manufacturer instructions. Make sure you disconnect the Go Wireless Electrode Amplifier from its Bluetooth source.

#### Calibration Information

If you are connecting an ORP or ISE electrode, it is not necessary to calibrate since it is a direct reading off of the electrode. Make sure you have switched units to mV as described above.

If you are connecting a pH electrode, it is recommended to calibrate the Go Wireless Electrode Amplifier once an electrode is attached via BNC. See the Go Wireless pH user guide for additional information: <http://www.vernier.com/gw-ph/>

#### Battery Information

Go Wireless Electrode Amplifier contains a small lithium-ion battery in the handle. The system is designed to consume very little power and not put heavy demands on the battery. Although the battery is warranted for one year, the expected battery life should be several years. Replacement batteries are available from Vernier (order code: GW-BAT-100).

Use only the Vernier Go Wireless Charging Cable (order code: GW-CB) or Go Wireless Charging Station (order code: GW-CRG) to charge the battery.

#### Storage and Maintenance of Go Wireless Electrode Amplifier

To store Go Wireless Electrode Amplifier for extended periods of time, put the device in sleep mode by holding the button down for at least three seconds. The red LED will stop flashing to show that the unit is in sleep mode. Over several months, the battery will discharge but not be damaged. After such storage, charge the device for a few hours and the unit will be ready to go.

Exposing the battery to temperatures over 35°C (95°F) will reduce its lifespan. If possible, store Go Wireless Electrode Amplifier in an area that is not exposed to temperature extremes.

## Replacement Parts

### Vernier Software & Technology

Part	Order code
Go Wireless Charging Cable	GW-CB
Go Wireless pH (electrode only)	GW-PH-NP
Go Wireless Battery	GW-BAT-100

## Related Products

### Go Wireless Charging Station (order code: GW-CRG)

Multi-sensor charging capability for your Go Wireless Electrode Amplifiers. The Go Wireless Charging Station is the perfect solution for charging and storing your Go Wireless Electrode Amplifier. For more information, see [www.vernier.com/gw-crg](http://www.vernier.com/gw-crg)

## Disposal Instruction

When disposing of this electronic product, do not treat it as household waste. Its disposal is subject to regulations that vary by country and region. This item should be given to an applicable collection point for the recycling of electrical and electronic equipment. By ensuring that this product is disposed of correctly, you help prevent potential negative consequences on human health or on the environment. The recycling of materials will help to conserve natural resources. For more detailed information about recycling this product, contact your local city office or your disposal service.

The symbol, shown here, indicates that this product must not be disposed of in a standard waste container.



## Warranty

Vernier warrants this product to be free from defects in materials and workmanship for a period of five years from the date of shipment to the customer. This warranty does not cover damage to the product caused by abuse or improper use. The battery is covered by a one-year warranty.

## Federal Communication Commission Interference Statement

This equipment has been tested and found to comply with the limits for a Class B digital device, pursuant to Part 15 of the FCC rules. These limits are designed to provide reasonable protection against harmful interference in a residential installation. This equipment generates, uses and can radiate radio frequency energy and, if not installed and used in accordance with the instructions, may cause harmful interference to radio communications. However, there is no guarantee that interference will not occur in a particular installation. If this equipment does cause harmful interference to radio or television reception, which can be determined by turning the equipment off and on, the user is encouraged to try to correct the interference by one or more of the following measures:

- Reorient or relocate the receiving antenna.
- Increase the separation between the equipment and receiver.
- Connect the equipment into an outlet on a circuit different from that to which the receiver is connected.
- Consult the dealer or an experienced radio/TV technician for help.

### FCC Caution

This device complies with Part 15 of the FCC Rules. Operation is subject to the following two conditions:

- (1) this device may not cause harmful interference and
- (2) this device must accept any interference received, including interference that may cause undesired operation

### RF Exposure Warning

The equipment complies with RF exposure limits set forth for an uncontrolled environment. The antenna(s) used for this transmitter must not be co-located or operating in conjunction with any other antenna or transmitter.

You are cautioned that changes or modifications not expressly approved by the party responsible for compliance could void your authority to operate the equipment.

## IC Statement

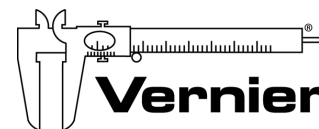
This device complies with Industry Canada license-exempt RSS standard(s). Operation is subject to the following two conditions: (1) this device may not cause interference, and (2) this device must accept any interference, including interference that may cause undesired operation of the device.

**Industry Canada - Class B** This digital apparatus does not exceed the Class B limits for radio noise emissions from digital apparatus as set out in the interference-causing equipment standard entitled "Digital Apparatus," ICES-003 of Industry Canada. Operation is subject to the following two conditions: (1) this device may not cause interference, and (2) this device must accept any interference, including interference that may cause undesired operation of the device. To reduce potential radio interference to other users, the antenna type and its gain should be so chosen that the equivalent isotropically radiated power (e.i.r.p.) is not more than that permitted for successful communication.

**RF exposure warning:** The equipment complies with RF exposure limits set forth for an uncontrolled environment. The antenna(s) used for this transmitter must not be co-located or operating in conjunction with any other antenna or transmitter.

*Le présent appareil est conforme aux CNR d'Industrie Canada applicables aux appareils radio exempts de licence. L'exploitation est autorisée aux deux conditions suivantes : (1) l'appareil ne doit pas produire de brouillage, et (2) l'appareil doit accepter toute interférence radioélectrique, même si cela résulte à un brouillage susceptible d'en compromettre le fonctionnement.*

*Cet appareil numérique respecte les limites de bruits radioélectriques applicables aux appareils numériques de Classe B prescrites dans la norme sur le matériel interférant-brouilleur: "Appareils Numériques," NMB-003 édictée par Industrie Canada. L'utilisation est soumise aux deux conditions suivantes: (1) cet appareil ne peut causer d'interférences, et (2) cet appareil doit accepter toutes interférences, y comprises celles susceptibles de provoquer un dysfonctionnement du dispositif. Afin de réduire les interférences radio potentielles pour les autres utilisateurs, le type d'antenne et son gain doivent être choisis de telle façon que l'équivalent de puissance isotrope émis (e.i.r.p.) n'est pas plus grand que celui permis pour une communication établie. **Avertissement d'exposition RF:** L'équipement est conforme aux limites d'exposition aux RF établies pour un environnement non supervisé. L'antenne (s) utilisée pour ce transmetteur ne doit pas être jumelée ou fonctionner en conjonction avec toute autre antenne ou transmetteur.*



Measure. Analyze. Learn.™  
Vernier Software & Technology

13979 S. W. Millikan Way • Beaverton, OR 97005-2886

Toll Free (888) 837-6437 • (503) 277-2299 • FAX (503) 277-2440

[info@vernier.com](mailto:info@vernier.com) • [www.vernier.com](http://www.vernier.com)

Rev. 10/20/2014

Go Wireless and Graphical Analysis are our trademarks in the United States. All other marks not owned by us that appear herein are the property of their respective owners, who may or may not be affiliated with, connected to, or sponsored by us.



Printed on recycled paper.